



# Holly Springs High School

Home of the Golden Hawks

**CAREER & TECHNICAL EDUCATION DEPARTMENT**  
**MINI PLANNING GUIDE**  
**CAREER CLUSTERS AND ELECTIVES FOR 2009-10**

**AGRICULTURE, FOOD & NATURAL RESOURCES**  
**ARCHITECTURE & CONSTRUCTION**  
**ARTS, AUDIO/VIDEO TECHNOLOGY**  
**& COMMUNICATIONS**  
**BUSINESS MANAGEMENT & ADMINISTRATION**  
**FINANCE**  
**HEALTH SCIENCE**  
**HOSPITALITY & TOURISM**  
**HUMAN SERVICES**  
**INFORMATION TECHNOLOGY**  
**MANUFACTURING**  
**MARKETING**  
**SCIENCE, TECHNOLOGY, ENGINEERING &**  
**MATHEMATICS**  
**TRANSPORTATION, DISTRIBUTION & LOGISTICS**



# Holly Springs High School

Home of the Golden Hawks

## CTE CAREER CLUSTERS AND ELECTIVES FOR 2009-10

*Beginning with the freshman class of 2009-2010, North Carolina students must meet Future Ready Core graduation requirements.* These requirements encourage students to use their four required elective credits to complete a concentration in an area of special interest such as Career and Technical Education (CTE) by earning at least four credits in a discipline, including one at an advanced level.

*To qualify as a CTE concentrator for graduation and for federal reporting purposes, students must earn four credits within one of the 16 Career Clusters.* The attached charts define how the Career Clusters will be implemented in North Carolina. Career Clusters represent broad occupational areas. Each Career Cluster is made up of multiple related pathways, which are sub-groupings of occupations/career specialties that require a set of common knowledge and skills for career success. Each pathway contains multiple specific occupations/career specialties.

*Students will work with their Career Development Coordinator, school counselor or CTE teacher to determine which courses can help them focus on career interests and postsecondary goals.* Students choose at least three technical credits from the Foundational courses within the Career Cluster. Their fourth technical credit can be either a Foundational or an Enhancement course. Students must select courses that work together to prepare them for careers or further education. At least one of the Foundational technical credits must be at the completer level. Completer courses, identified with an asterisk on the accompanying charts, are considered to be at the capstone level. Completer courses appear in only one cluster. Enhancement courses can be from any program area within the cluster.

For approved courses that are not supported in the 2002 NC CTE Standard Course of Study, students may design a customized program that combines directly related pilot courses, local option courses, and community college and university courses.

Department of Labor Registered Apprenticeship courses available in each program area can count as a completer course the second year the student participates. Manual override is required.

Courses that can be taught in more than one program area are listed in the area that has primary responsibility for that content.

Students are encouraged to take additional technical credits beyond the four-credit requirement to qualify as a concentrator. Students should work with their Career Development Coordinator or school counselor to determine which additional courses are most appropriate based on their career interests and postsecondary goals.

*The attached charts include only courses from the 2002 Standard Course of Study.* Additional documentation will provide information on how to include pilot and local option courses. As a general rule, university and community college courses are designed to enhance Foundational offerings. Community college and university courses can count as Foundational technical credits if they provide core content for the cluster, but manual overrides will be required.

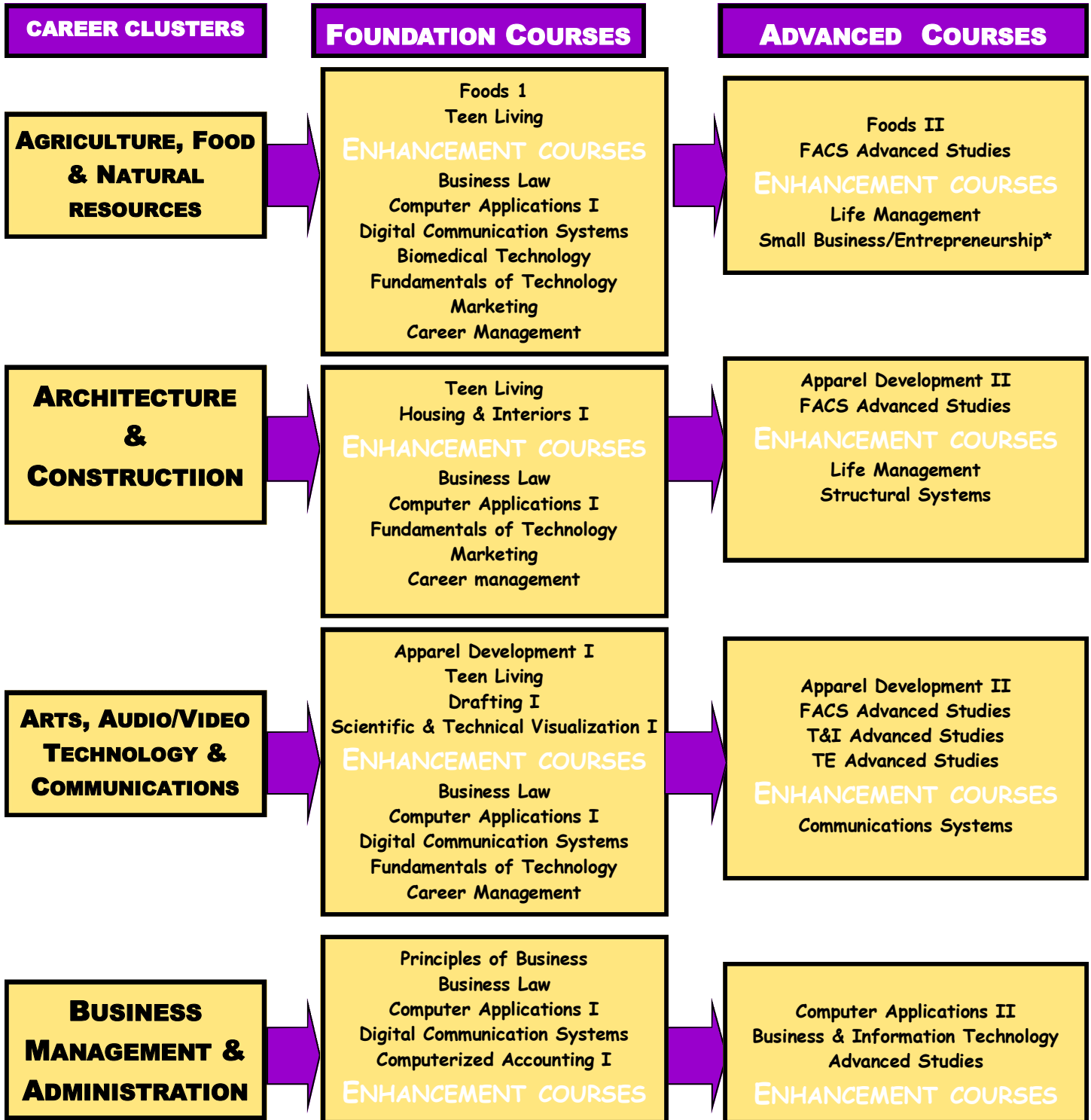
In the 2002 NC CTE Standard Course of Study, *the following Career Clusters are not currently supported: Education and Training, Government and Public Administration, and Public Safety.* Students can complete a Career Cluster in these areas by combining local option courses, community college and university dual enrollment courses, and selected enhancement courses. These Career Clusters are being considered for inclusion in the upcoming revision of the Standard Course of Study.



# Holly Springs High School

Home of the Golden Hawks

## CTE CAREER CLUSTERS AND ELECTIVES FOR 2009-10



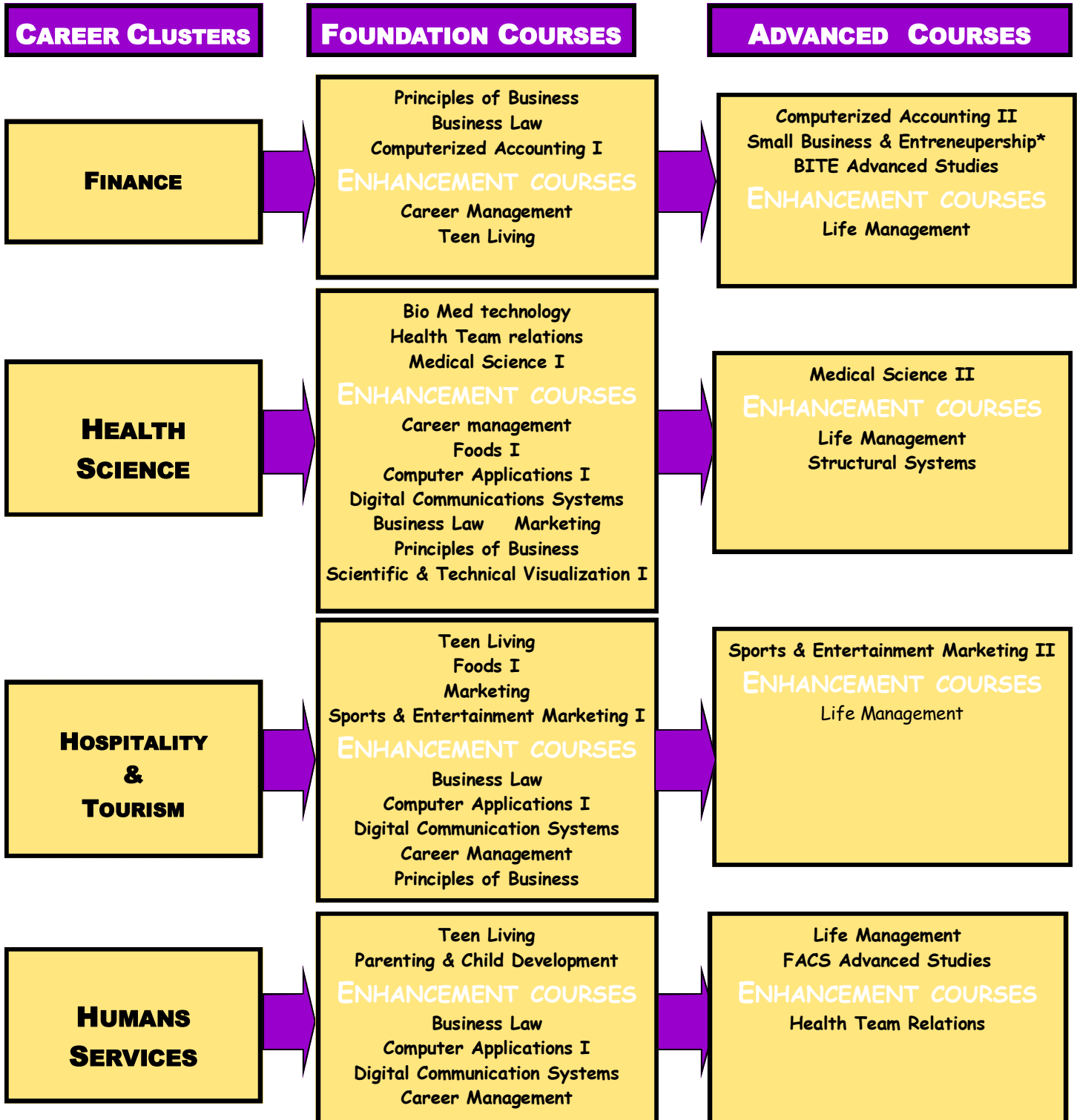
\* Indicates a capstone course    ^ 3 credits in T&I including a capstone    + prerequisite required  
 College Tech Prep or Career Prep Course of Study students must select 4 courses in a Career Pathway including a capstone course.



# Holly Springs High School

Home of the Golden Hawks

## CTE CAREER CLUSTERS AND ELECTIVES FOR 2009-10



\* Indicates a capstone course    ^ 3 credits in T&I including a capstone    + prerequisite required

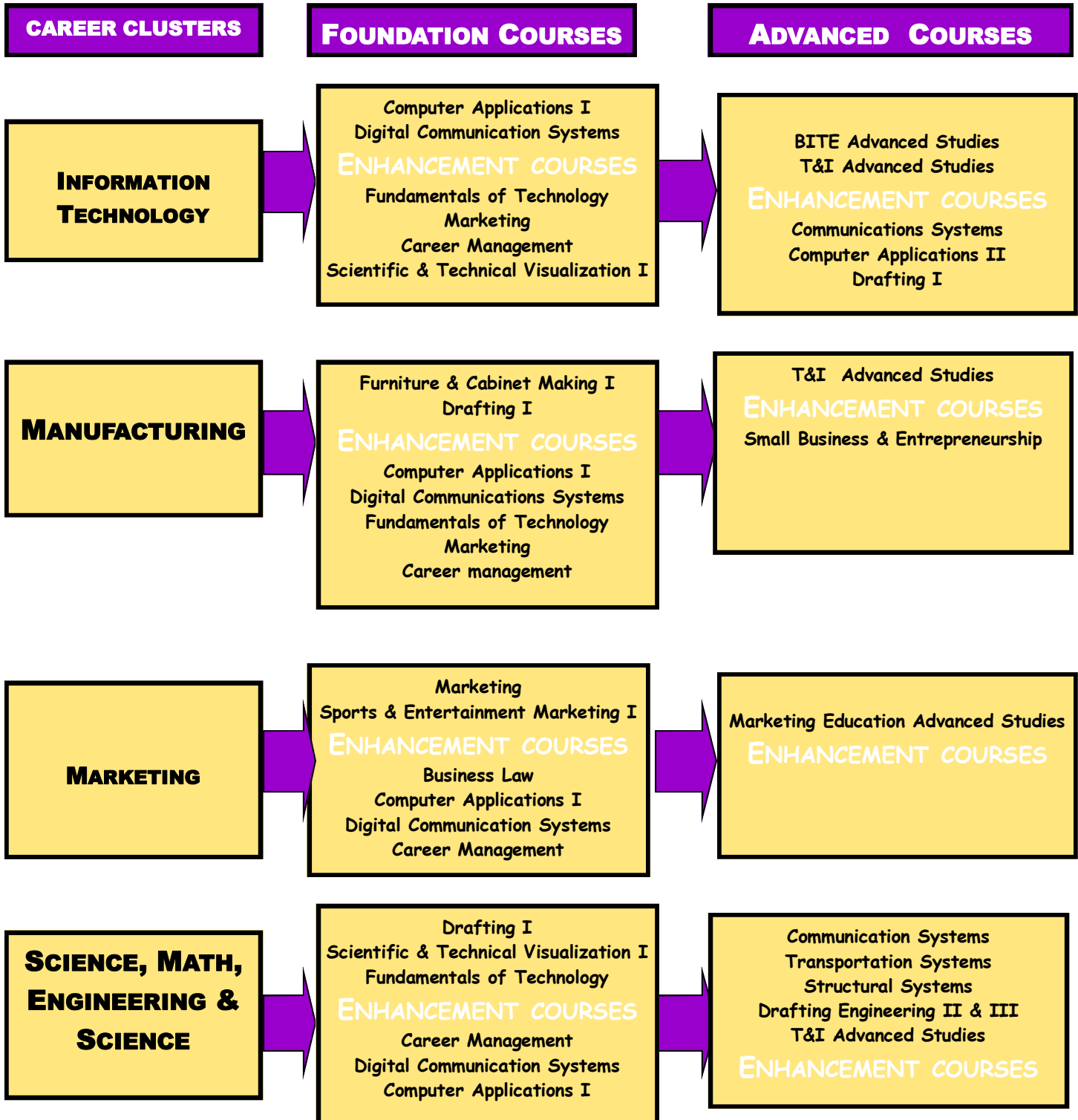
College Tech Prep or Career Prep Course of Study students must select 4 courses in a Career Pathway including a capstone course.



# Holly Springs High School

Home of the Golden Hawks

## CTE CAREER CLUSTERS AND ELECTIVES FOR 2009-10



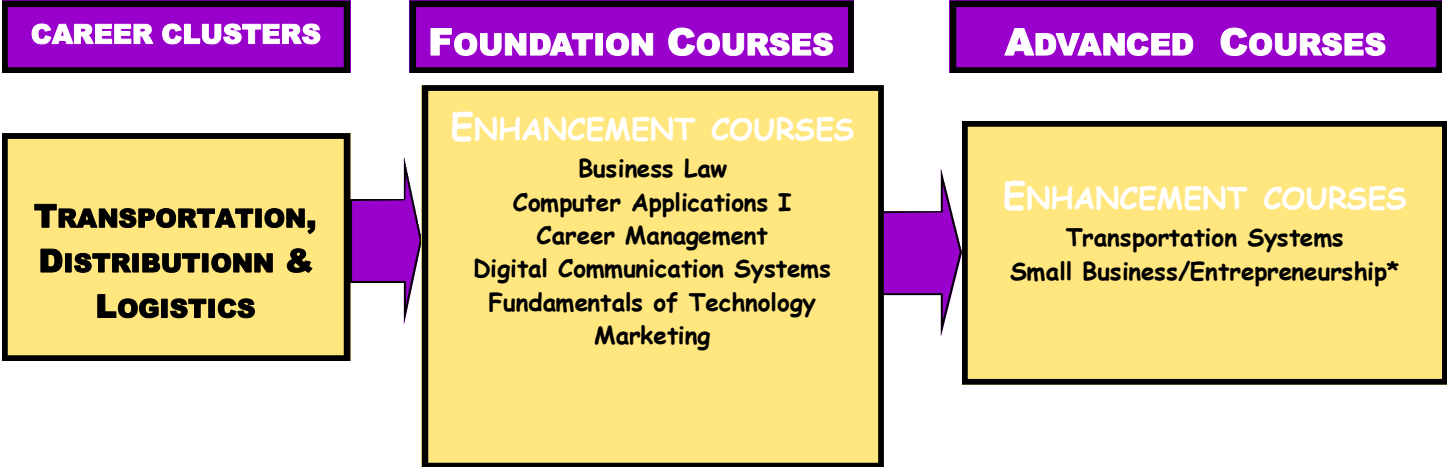
\* Indicates a capstone course    ^ 3 credits in T&I including a capstone    + prerequisite required  
 College Tech Prep or Career Prep Course of Study students must select 4 courses in a Career Pathway including a capstone course.



# Holly Springs High School

Home of the Golden Hawks

## CTE CAREER CLUSTERS AND ELECTIVES FOR 2009-10



\* Indicates a capstone course    ^ 3 credits in T&I including a capstone    + prerequisite required  
College Tech Prep or Career Prep Course of Study students must select 4 courses in a Career Pathway including a capstone course.